

SUSQUEHANNA REGIONAL TRANSPORTATION AUTHORITY

Unaudited Financial Statement & Statistical Notes for August 2023

The financial statements enclosed with these notes, are as of August 31, 2023. This is the second month of fiscal year 2024.

The presented financial statements reflect the adopted fiscal year 2024 budget.

The income statement includes comparative previous fiscal year to date information.

Ridership

- Year to date comparisons to the prior year are as follows:
 - Fixed Route: Demonstrated an impressive 17% increase in ridership compared to the previous year.
 - Paratransit: Witnessed year to date ridership that was virtually even with the previous year (+2/10 of 1%) This overall lack of growth is the result of a decline in ridership in Dauphin and Northumberland, which operated at levels 15% below the prior year. The inability to fill open driver positions and the resultant limit on the Division's capacity to do trips are the primary driver of this phenomenon.
 - Commuter Express: Experienced a marginal 3% increase from last year's figures. During July and August, this service provided 6,185 trips.
 - Microtransit: Impressed with a 63% increase in ridership compared to the same period last year.

Revenue

- Year to Date Grant and Contract Income is below budget by \$682 thousand because less subsidy was required than the budget anticipated.

Expenses

- Year to Date Total Expenses are \$1.1 million, or 11% lower than budget.
- Unfilled positions increased to 73 this month. This is 11% of approved positions. There are however 17 candidates who will be hired pending the receipt of their medical card, drug screen result or background check. If these candidates are hired it will reduce the open positions to 8 ½% of approved positions. For more information, please see the graph and numbers by Division in the SRTA Dashboard.

Reserves

- As of August 31, reserves are consistent with the goal of the Authority.

Line of Credit

- There are no draws on the organization's lines of credit.

Capital Expenditure (over \$50,000)

- 19 Paratransit Revenue Vehicles at CPTA \$2,093,500

**Susquehanna Regional Transportation Authority
Income Statement**

For The Period Ended August 31 , 2023

	Period To Date		Year To Date		Budget Variance	Year To Date August 31, 2022
	Actual	Current Budget	Actual	Current Budget		
REVENUE						
Operating Revenue	\$ 1,929,505	\$ 2,116,455	\$ 3,790,784	\$ 4,232,910	\$ (442,126)	\$ 4,463,578
Grant/Contract Income	\$ 2,786,886	\$ 3,023,471	\$ 5,364,873	\$ 6,046,942	\$ (682,069)	\$ 5,317,878
TOTAL REVENUE	\$ 4,716,391	\$ 5,139,926	\$ 9,155,657	\$ 10,279,852	\$ (1,124,195)	\$ 9,781,456
Wages	\$ 2,303,441	\$ 2,233,427	\$ 4,264,285	\$ 4,466,854	\$ 202,569	\$ 4,016,397
Benefits	\$ 1,079,491	\$ 1,337,781	\$ 2,222,615	\$ 2,675,562	\$ 452,947	\$ 2,294,379
Services	\$ 210,262	\$ 319,309	\$ 421,626	\$ 638,618	\$ 216,992	\$ 688,698
Fuel	\$ 441,630	\$ 409,573	\$ 861,993	\$ 819,146	\$ (42,847)	\$ 954,206
Tires	\$ 14,341	\$ 27,453	\$ 35,177	\$ 54,906	\$ 19,729	\$ 43,464
Materials and Supplies	\$ 138,549	\$ 135,466	\$ 224,600	\$ 270,932	\$ 46,332	\$ 296,247
Utilities	\$ 90,041	\$ 113,299	\$ 181,726	\$ 226,598	\$ 44,872	\$ 175,012
Casualty and Liability Costs	\$ 113,376	\$ 127,062	\$ 239,754	\$ 254,124	\$ 14,370	\$ 222,354
Purchased Transportation	\$ 263,340	\$ 360,768	\$ 565,277	\$ 721,536	\$ 156,259	\$ 971,438
Miscellaneous Expenses	\$ 28,146	\$ 29,675	\$ 49,184	\$ 59,350	\$ 10,166	\$ 46,159
Leases and Rentals	\$ 9,699	\$ 11,833	\$ 20,293	\$ 23,666	\$ 3,373	\$ 22,137
Passed Through Expenses	\$ 24,075	\$ 34,280	\$ 69,126	\$ 68,560	\$ (566)	\$ 50,965
TOTAL EXPENSES	\$ 4,716,392	\$ 5,139,926	\$ 9,155,658	\$ 10,279,852	\$ 1,124,195	\$ 9,781,456
TOTAL NON OPERATING GRANT INCOME **	\$ 343,959	\$ 487,652	\$ 665,305	\$ 975,304	\$ 309,999	\$ 995,047
TOTAL NON OPERATING GRANT EXPENSES **	\$ 336,507	\$ 484,878	\$ 650,610	\$ 969,756	\$ 319,146	\$ 995,047
REE/(EER)	\$ 7,452	\$ 2,774	\$ 14,694	\$ 5,548	\$ (9,146)	\$ (0)
CAPITAL REVENUES AND EXPENSES						
Capital Grant Income/(Refund)	\$ -	\$ -	\$ -	\$ -	\$ -	\$ 428,893
TOTAL CAPITAL REVENUES AND EXPENSES	\$ -	\$ -	\$ -	\$ -	\$ -	\$ 428,893
REE/(EER)	\$ 7,452	\$ 2,774	\$ 14,694	\$ 5,548	\$ (9,146)	\$ 428,892
NET REE/(EER)	\$ 7,452	\$ 2,774	\$ 14,694	\$ 5,548	\$ (9,146)	\$ 428,892

**FindMyRide, UMPC, GMCO, ICB, GHP

Susquehanna Regional Transportation Authority
Balance Sheet

As of August 31, 2023

ASSETS

CURRENT ASSETS			
Unrestricted Cash	\$	17,208,707	
Restricted Cash	\$	93,187	
Reserved Cash - Capital Projects	\$	-	
Accounts Receivable	\$	13,548,327	
Materials & Supplies Inventory	\$	936,520	
Prepaid Expenses	\$	1,145,984	
Other Current Assets	\$	-	
TOTAL CURRENT ASSETS		\$	32,932,725
FIXED ASSETS			
Buildings and Improvements	\$	98,366,810	
Revenue Equipment	\$	58,340,982	
Tools and Equipment	\$	3,963,442	
Accumulated Depreciation	\$	(74,358,093)	
TOTAL FIXED ASSETS (NET)		\$	86,313,140
TOTAL ASSETS		\$	119,245,865

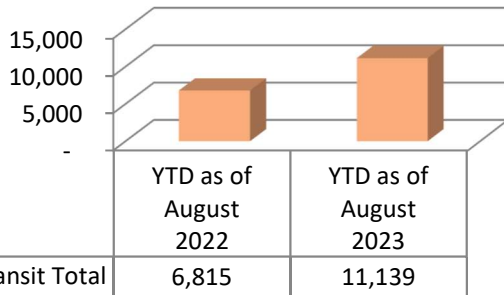
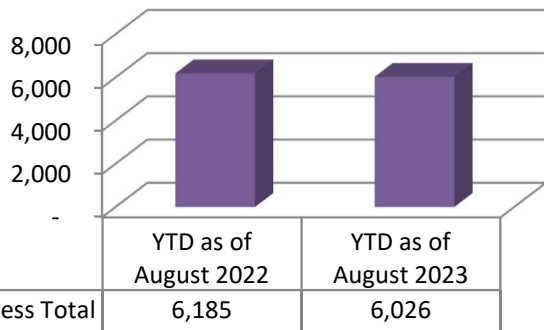
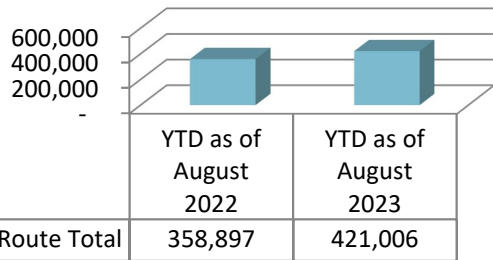
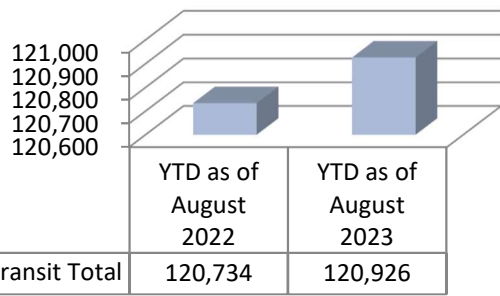
LIABILITIES AND NET ASSETS

CURRENT LIABILITIES			
Accounts Payable	\$	4,970,590	
Accrued Leave and Payroll	\$	2,378,891	
Accrued Expenses	\$	1,196,695	
TOTAL CURRENT LIABILITIES		\$	8,546,176
DEFERRED REVENUE			
Revenue Received in Advance	\$	52,170,169	
TOTAL DEFERRED REVENUE		\$	52,170,169
OTHER LIABILITIES			
Capital Lease Obligation	\$	-	
Accrued Sick Pay	\$	-	
Current Notes Payable	\$	-	
Consortium Buses	\$	-	
TOTAL OTHER LIABILITIES		\$	-
NET ASSETS			
Unrestricted Equity	\$	23,433,489	
Restricted Equity	\$	15,520	
Capital Grants	\$	35,080,512	
TOTAL NET ASSETS		\$	58,529,521
TOTAL LIABILITIES AND NET ASSETS		\$	119,245,865



SRTA DASHBOARD – September 2023

OPERATIONS – August



MAINTENANCE – August

Preventative Maintenance



185 PMs Complete; 2 Overdue
 Adams – 12 Completed; 0 Overdue
 Columbia – 3 Completed; 0 Overdue
 Cumberland – 14 Completed; 0 Overdue
 Dauphin – 31 Completed; 0 Overdue
 Franklin – 9 Completed; 0 Overdue
 Montour – 1 Completed; 0 Overdue
 Northumberland – 19 Completed; 0 Overdue
 Perry – 14 Completed; 1 Overdue
 Union/Snyder – 14 Completed; 0 Overdue
 York – 67 Completed; 1 Overdue

Road Calls:

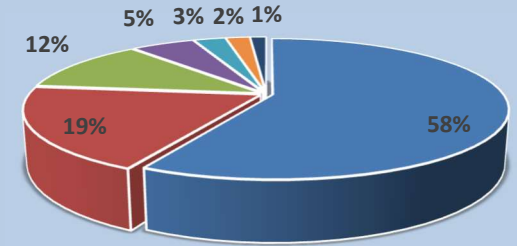
	Aug. 2023	YTD FY2024	Aug. 2022	YTD FY2023
Mechanical	16	27	12	26
Non-Mech.	8	18	9	16

SAFETY – August

	Aug. 2023	YTD as of Aug. 2023	Aug. 2022	YTD as of Aug. 2022
Preventable	10	22	14	29
Non-Preventable	7	19	12	19
Passenger Injury	2	5	0	0
Employee Injury	5	14	6	8

CUSTOMER COMPLAINTS – August

Count Distribution By Category
 151
 Complaints/Commendations



- Service Issue
- Operator Problem
- Safety
- Other
- Service Request
- Vehicle Issue
- Facilities

	Aug. 2023	YTD as of Aug. 2023	Aug. 2022	YTD as of Aug. 2022
Total Complaints	151	259	162	289

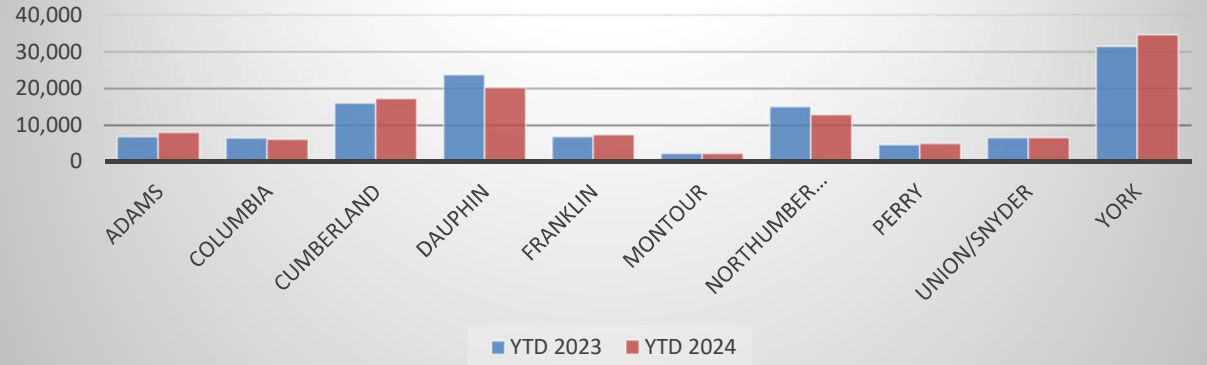
MARKETING – August

	August 2023	YTD as of Aug. 2023	August 2022	YTD as of Aug 2022
PR Exposures	10	13	8	19
Outreaches	7	11	4	6
Views/Pageviews	158,287	298,934	156,434	295,210
Event Count/Unique Pageviews	420,580	793,174	124,861	235,003
Users	27,097	51,305	n/a	n/a
Bikes	3,037	6,017	2,719	5,215

Paratransit Ridership - YTD

	YTD 2023	YTD 2024
<i>Adams</i>	6,962	8,095
<i>Columbia</i>	6,626	6,248
<i>Cumberland</i>	16,021	17,256
<i>Dauphin</i>	23,785	20,283
<i>Franklin</i>	6,893	7,471
<i>Montour</i>	2,410	2,361
<i>Northumberland</i>	15,130	12,885
<i>Perry</i>	4,773	5,058
<i>Union/Snyder</i>	6,648	6,628
<i>York</i>	31,486	34,641

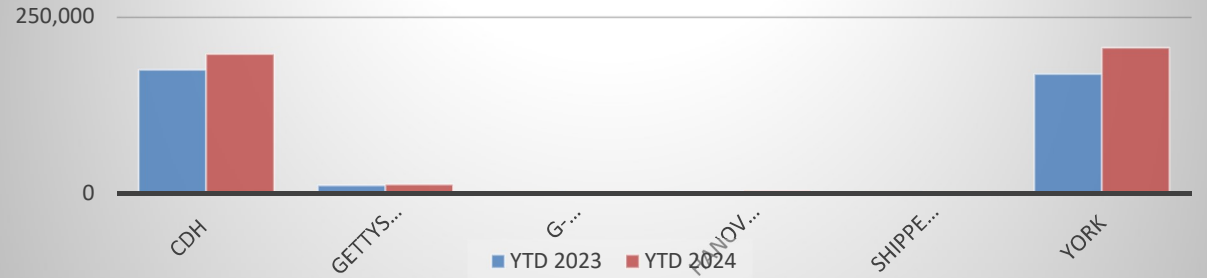
Paratransit Ridership - YTD



Fixed Route Ridership -YTD

	YTD 2023	YTD 2024
<i>CDH</i>	174,224	196,504
<i>Gettysburg</i>	10,998	12,423
<i>G-burg/Hanover Connector</i>	1,686	1,654
<i>Hanover</i>	2,423	3,331
<i>Shippensburg</i>	1,506	1,904
<i>York</i>	168,060	205,190

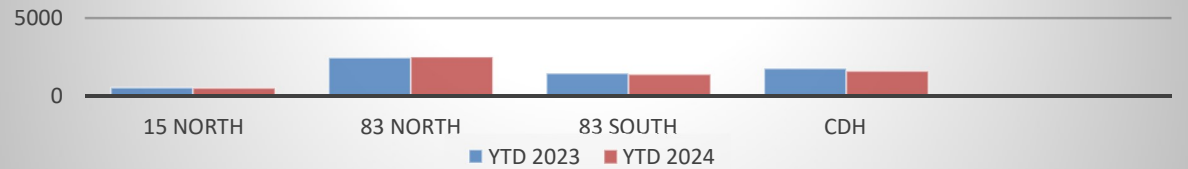
Fixed Route Ridership - YTD



Express Ridership - YTD

	YTD 2023	YTD 2024
<i>15 North</i>	549	536
<i>83 North</i>	2,436	2,504
<i>83 South</i>	1,446	1,396
<i>CDH</i>	1,754	1,590

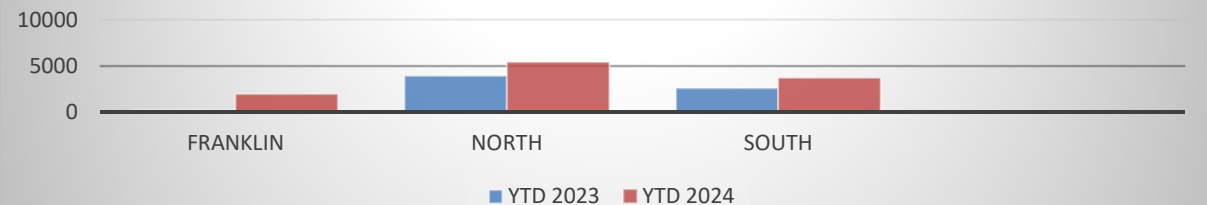
Express Ridership - YTD



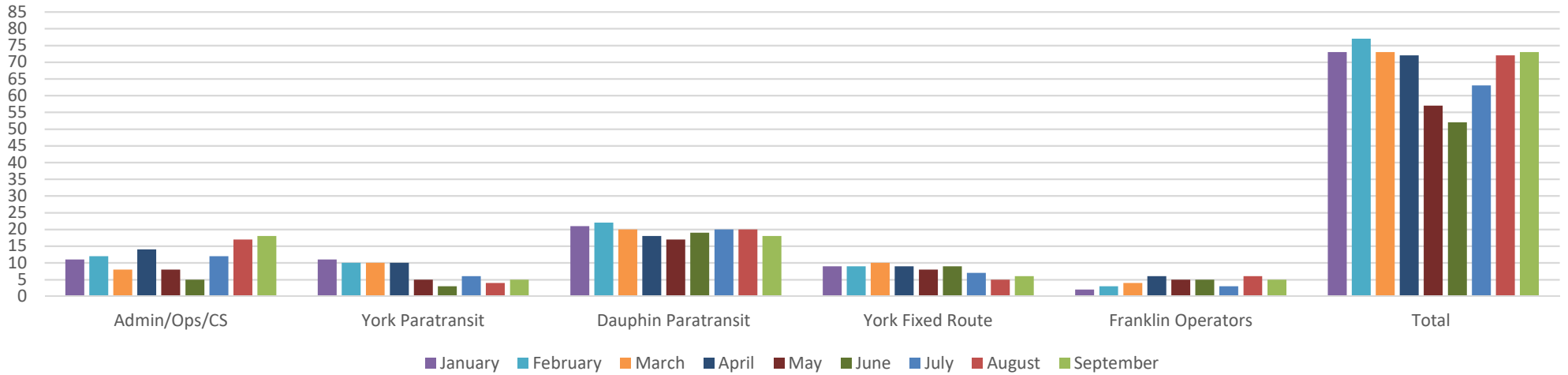
Microtransit Ridership – YTD

	YTD 2023	YTD 2024
<i>Franklin (Began 8/22)</i>	245	1,969
<i>North</i>	3,950	5,447
<i>South</i>	2,620	3,723

Microtransit Ridership - YTD



Top 5 Divisions- Open Positions



September 2023	Approved Positions	Current employees	Number approved openings
Adams Operators	28	27	1
Administrative/Operations Support/Customer Service Rep	153	135	18
Columbia Operators	12	11	1
Cumberland Operators	32	27	5
Dauphin Fixed Route	93	90	3
Dauphin Info Specialists	2	2	0
Dauphin Maintenance (Mechanics, Serviceperson)	20	18	2
Dauphin Paratransit	35	17	18
Franklin Operators	34	29	5
Montour Operators	9	8	1
Northumberland Operators	36	32	4
Perry Operators	21	20	1
Union/Snyder Operators	33	33	0
York Express	7	6	1
York Fixed Route	63	57	6
York Maintenance (Mechanics and Porters)	18	16	2
York Paratransit	61	56	5
Total - September 2023	657	584	73